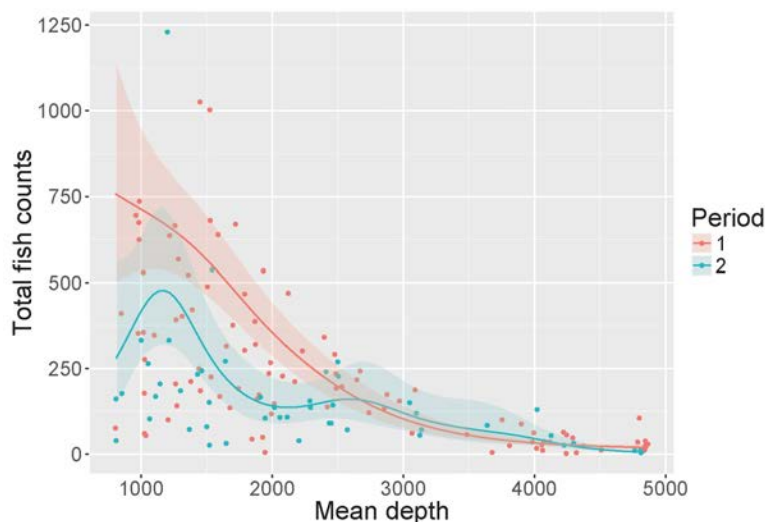


# Data Exploration, Regression, GLM & GAM with introduction to R

Provided by: Highland Statistics Ltd

Organised by: MANTEL EJD ITN [www.mantel-itn.org](http://www.mantel-itn.org)



We begin with an introduction to R and provide a protocol for data exploration to avoid common statistical problems. We will discuss how to detect outliers, deal with collinearity and transformations.

An important statistical tool is multiple linear regression. Various basic linear regression topics will be explained from a biological point of view. We will discuss potential problems and show how generalised linear models (GLM) can be used to analyse count data. Sometimes, parametric models (linear regression, GLM) do not quite fit the data and in such cases generalised additive models (GAM; a smoothing technique) can be used. We will pay special attention how GAMs can be used for the analysis of time series.

During the course several case studies are presented, in which the statistical theory is integrated with applied analyses in a clear and understandable manner.

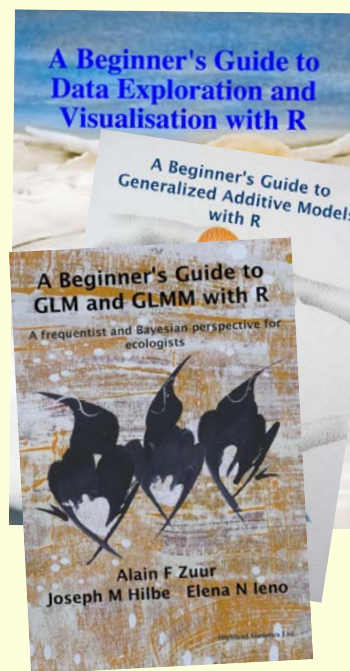
## Date & Venue

Date: 28 May - 1 June 2018

Venue: Erken Laboratory Field Station, Sweden

Price: £515

Instructors: Dr. Alain Zuur  
Dr. Elena Ieno



## KEYWORDS

Introduction to R. Outliers. Transformations. Collinearity (correlation between covariates). Multiple linear regression. Model selection. Visualising results. Poisson GLM. Overdispersion. Negative binomial GLM. ggplot2. GAM for time series.



## COURSE CONTENT

### Monday:

- General introduction.
- Introduction to R.
- Theory presentation on data exploration (outliers, collinearity, transformations, relationships, interactions).
  - Based on Zuur et al. (2010) and Ieno and Zuur (2015).
- Two exercises.

### Tuesday & Wednesday morning:

- Theory presentation on linear regression.
  - Different strategies for model selection.
  - Interactions.
  - Dealing with categorical covariates.
  - Sketching model fit.
- Two exercises.

### Wednesday:

- Theory presentation on Poisson and negative binomial distributions for the analysis of count data.
  - Based on Chapter 1 in Zuur et al. (2013).
- Theory presentation on GLM.
  - Poisson GLM.
  - Negative binomial GLM.
  - Based on Chapter 1 in Zuur et al. (2013).
  - How to deal with overdispersion.
- Two exercises.

### Thursday and Friday:

- Theory presentation on GAM.
  - Two exercises using Gaussian GAM and Poisson and negative binomial GAMs.
  - GAM and time series.
  - Based on various chapters in Zuur (2012).
  - What to present in a paper

### Cited literature:

- Zuur, Ieno, Elphick. (2010). A protocol for data exploration to avoiding common statistical problems. *Methods in Ecology and Evolution*, **1**: 3-14.
- Zuur (2013) Beginner's Guide to GAM with R.
- Zuur, Hilbe, Ieno (2013). Beginner's Guide to GLM and GLMM with R.

### GENERAL INFORMATION

#### COURSE FEE: £515

- Credit card payments are charged in GBP currency. UK participants are subject to 20% VAT. EU participants (but non-UK) are not subject to UK VAT, but need to provide their institutional VAT number. Non-EU participants are not subject to VAT.
- The course fee excludes refreshments and lunch.

#### COURSE TIMES:

- Monday-Thursday: 09.00am to 16.00pm.
- Friday: 08.30am to 15.00.
- 1 hour lunch and a 20 minutes break both morning and afternoon.

#### COURSE MATERIAL:

- Pdf files of all powerpoint presentations are provided
- The powerpoint files are based on various chapters from:
  - Chapters 4 - 5 from Zuur, Ieno, Smith (2007). *Analysing Ecological Data*
  - *A Beginner's Guide to GLM and GLMM using MCMC with R.* (2013).
  - *A Beginner's Guide to Zero Inflated Models with R.* (2016)
  - Chapter 3 in *Beginner's Guide to GAM with R.* Zuur (2013).
  - Books are not included in the course fee. The course can be followed without purchasing these books.

#### PRE-REQUIRED KNOWLEDGE:

Basic statistics (e.g. mean, variance, normality). No R knowledge is required. You will learn R 'on the fly'. This is a non-technical course.

#### CANCELLATION POLICY:

What if you are not able to participate? Once participants are given access to course exercises with R solution codes, pdf files of certain book chapters, pdf files of powerpoint files and video solution files, all course fees are non-refundable. However, we will offer you the option to attend a future course or you can authorise a colleague to attend this course. Terms and conditions see: <http://highstat.com/index.php/sign-up2>

#### RECOMMEND LITERATURE:

- Zuur, Hilbe, Ieno (2013). *A Beginner's Guide to GLM and GLMM with R.*
- Ieno, Zuur (2015) *A Beginner's Guide to Data Exploration and Visualisation with R.*
- Zuur (2013). *A Beginner's Guide to GAM with R.*
- These books are available from [www.highstat.com](http://www.highstat.com)



#### GENERAL

- You need to bring your own laptop.
  - Please ensure that you have system administration rights to install R and R packages on your computer.
  - Instructions what to install will be provided before the start of the course.
- You will be given access to a course website with around 25 - 30 fully worked out R exercises. These are all based on published papers and real data sets.
- You will also get access to 11 fully worked out exercises with video solution files.

#### REGISTRATION

[www.highstat.com](http://www.highstat.com)

Dr Alain F Zuur  
[highstat@highstat.com](mailto:highstat@highstat.com)  
[www.highstat.com](http://www.highstat.com)  
Payment via credit card or bank transfer

